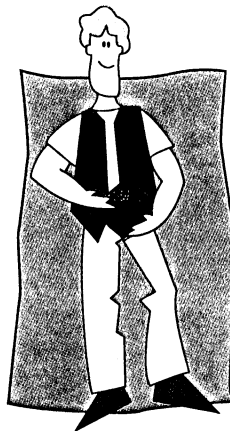


Buster Cube

is easy to use



Put the dry food into Buster Cube through the opening.



Turn the Buster Cube to distribute the food into the various compartments inside.

Buster Cube is divided into several compartments which release the food pellets when the dog rolls the Cube with his nose or paws. The smaller the food pellet, the more pellets it takes before your dog feels full and the more energy he will use getting enough food out of the Cube.

Also, because it is important that your dog does not become overweight, his daily food allowance should be reduced to an amount of food equal to what he eats when playing with the Cube.

Turning the cylinder towards min. or max. regulates how easily the food will be released, and is a way of adjusting the level of difficulty for your dog as he progresses. Enthusiastic Buster Cube-players need a greater challenge!

Buster Cube will withstand ordinary cleaning agents and is dishwasher safe. Avoid cleaning agents containing mineral solvents.

For ease of cleaning remove the central cylinder. When replacing it, make sure that it fits correctly into the opening of the Cube before pressing it down. When correctly assembled the cylinder should turn between min. and max. only.



Turn the central cylinder in the Buster Cube to adjust the level of difficulty.