

Purifying Pet Fountain

Petmate®

Assembly Instructions:

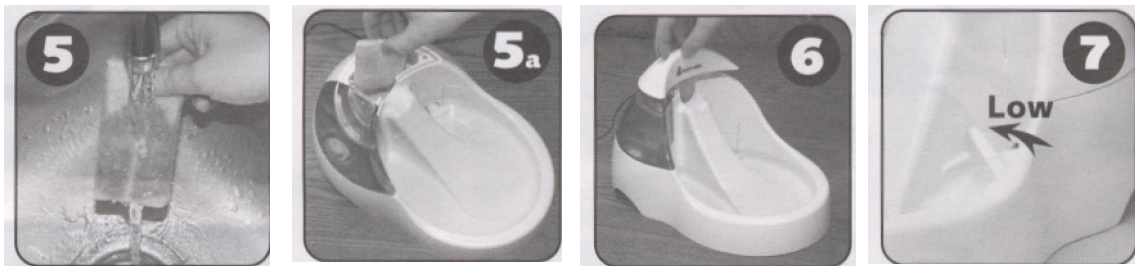
1. Remove rubber band from pump. Place pump in area where raised "L" ribs are in the back of base. Route cord out back of base through slot. Insert cord grommet in slot.
 - a. Make sure pump control lever is not interfering with reservoir fit.
 - b. Make sure reservoir snaps down snugly.
2. Replace filter reservoir.
 - a. Vertical pipe should extend downward and connect to black outflow pipe on pump.
3. Fill bowl until water level is just above hub of flow lever.
 - a. Fill filter reservoir with water.



4. Remove water reservoir
 - a. Unscrew cap.
 - b. Add water.
 - c. Replace cap.
 - d. Replace water reservoir in base.



5. Remove filter from package. Rinse in clear water until all charcoal dust is removed (normal for this type of charcoal filter.) Place filter in reservoir. Slide filter in slots diagonally. (a)



6. Place lid over reservoir and filter at top. Pump control lever should be on low before startup.
7. Place waterer on dry floor indoors. It is not designed for outdoor use.
8. Plug into electrical outlet. Adjust to desired water flow with flow adjustment.

Warning:

Do not let pump run dry. When pump makes air suction noise and water gurgling sound, water level is extremely low. Add water immediately.

Note: Pump may take 2-3 minutes before it begins circulating water. This allows time for air to be removed from pump. The pump is silent. You will not hear anything except the flowing of water down the slope.

The Submersible Pump is tested and certified to ensure safety and operating performance. Failure to follow instructions and warnings in this manual may result in pump damage and/or serious injury. Only the pump and electrical cord directly connecting the two are to come in contact with water. Under no circumstances should the plug-in transformer or other parts come into contact with water. Do not plug-in or otherwise use this product if any part of it appears to be damaged or operate abnormally. Make a “drip loop” on the electrical cord connecting the pump to the transformer plug by letting a portion of the cord hang lower than either the pump or the transformer. Do not let the pump run when not submerged in water. Doing so may damage pump. Always submerge the pump first, and then plug in. Keep the unit unplugged when not under direct observation. Use this product indoors only.

Maintenance:

Mineral build-up from tap water, or water from other sources, can ruin the pump. If debris is caught in the intake vents of the pump, disconnect the pump from any power source and rinse the pump under clean running water.

1. Filter maintenance: check charcoal filter after 30 days. Replace filter every 60 to 90 days for usage by one animal. Multiple animal homes will require more frequent replacement.
2. Cleaning: bowl, reservoirs and all plastic parts may be cleaned with mild soapy dish soap. Do not place unit in dishwasher.
3. Adding Water: Add water to blue storage reservoir when it appears low. You must remove the reservoir to add water to it. Water may also be added to bowl by pouring slowly from a cup directly into the bowl.