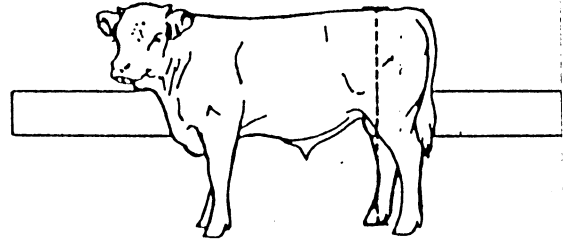
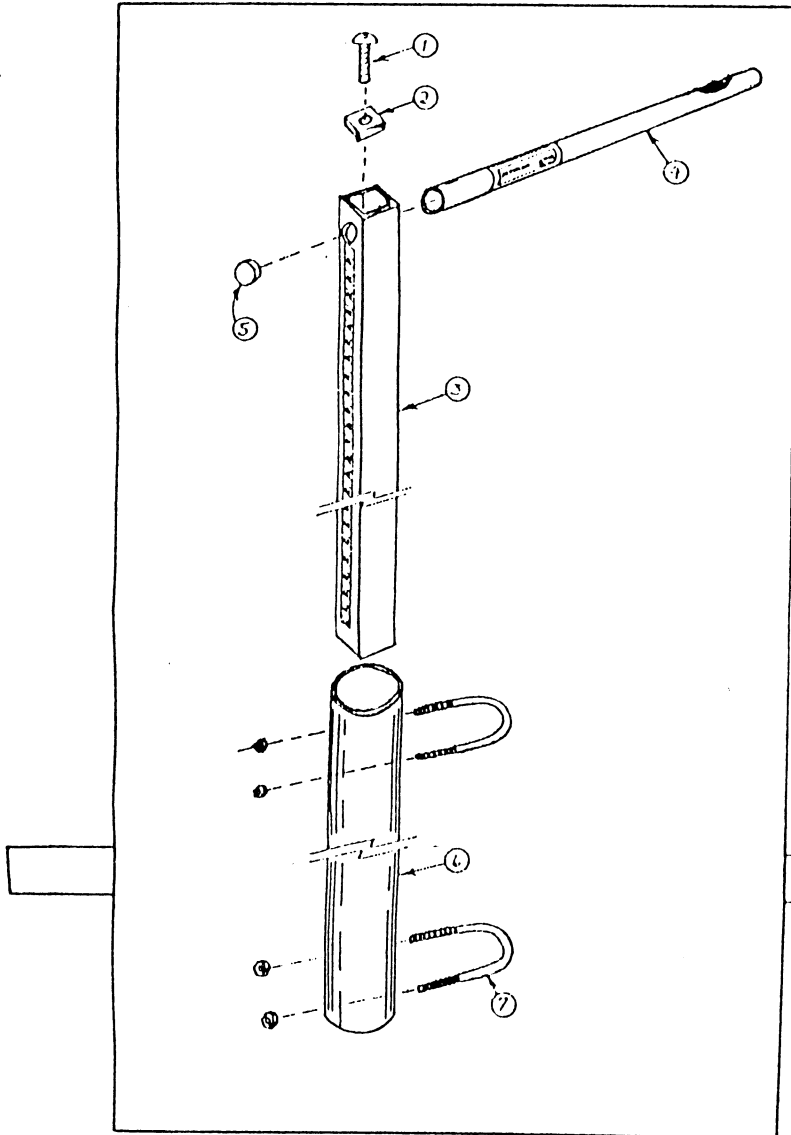


Assembly Instructions and Parts List



- | | |
|----|-----------------------|
| 1. | Screw |
| 2. | Square Plug |
| 3. | Square Measuring Tube |
| 4. | Horizontal Cross Arm |
| 5. | Cross Arm End Plug |
| 6. | Telescoping Tube |
| 7. | U-Bolts |

Insert horizontal cross arm #4 into square measuring tube #3. Tube hole and cross arm assembly is designed for a light press fit, so it may be necessary to tap cross arm into tube hole with a rubber mallet. Make sure to insert cross arm, with small threaded hole parallel to square measuring tube, starting into the square tube opposite side of the measure decal, until small hole is centered in square tube. Install screw and square plug into assembly. After screw is tightened, tap plug #5 into cross arm end until flush.

The Altitude Stick may be mounted on a scale or working alley if desired by bolting telescoping tube #6 with u-bolts.

CAUTION: Do not overtighten u-bolts.

Stick must slide and rotate

HIP HEIGHT MEASUREMENT IN INCHES TO DETERMINE VARIOUS FRAME SIZES AT DIFFERENT AGES

Data based on adjusted University of Missouri work for bulls*

| Age in Months | Frame Size 1 | Frame Size 2 | Frame Size 3 | Frame Size 4 | Frame Size 5 | Frame Size 6 |
|---------------|--------------|--------------|--------------|--------------|--------------|--------------|
| 6 | 35 | 37 | 39 | 41 | 43 | 45 |
| 7 | 36 | 38 | 40 | 42 | 44 | 46 |
| 8 | 37 | 39 | 41 | 43 | 45 | 47 |
| 9 | 38 | 40 | 42 | 44 | 46 | 48 |
| 10 | 39 | 41 | 43 | 45 | 47 | 49 |
| 11 | 40 | 42 | 44 | 46 | 48 | 50 |
| 12 | 41 | 43 | 45 | 47 | 49 | 51 |
| 13 | 41.5 | 43.5 | 45.5 | 47.5 | 49.5 | 51.5 |
| 14 | 42 | 44 | 46 | 48 | 50 | 52 |
| 15 | 42.5 | 44.5 | 46.5 | 48.5 | 50.5 | 52.5 |
| 16 | 43 | 45 | 47 | 49 | 51 | 53 |
| 17 | 43.5 | 45.5 | 47.5 | 49.5 | 51.5 | 53.5 |
| 18 | 44 | 46 | 48 | 50 | 52 | 54 |
| 19 | 44.25 | 46.25 | 48.25 | 50.25 | 52.25 | 54.25 |
| 20 | 44.5 | 46.5 | 48.5 | 50.5 | 52.5 | 54.5 |
| 21 | 44.75 | 46.75 | 48.75 | 50.75 | 52.75 | 54.75 |
| 22 | 45 | 47 | 49 | 51 | 53 | 55 |
| 23 | 45.25 | 47.25 | 49.25 | 51.25 | 53.25 | 55.25 |
| 24 | 45.5 | 47.5 | 49.5 | 51.5 | 53.5 | 55.5 |

* Research suggests that heifers will be about 2 inches shorter than bulls at 12 months of age. Under 12 months the difference is less and over 12 months the difference will be greater.

