



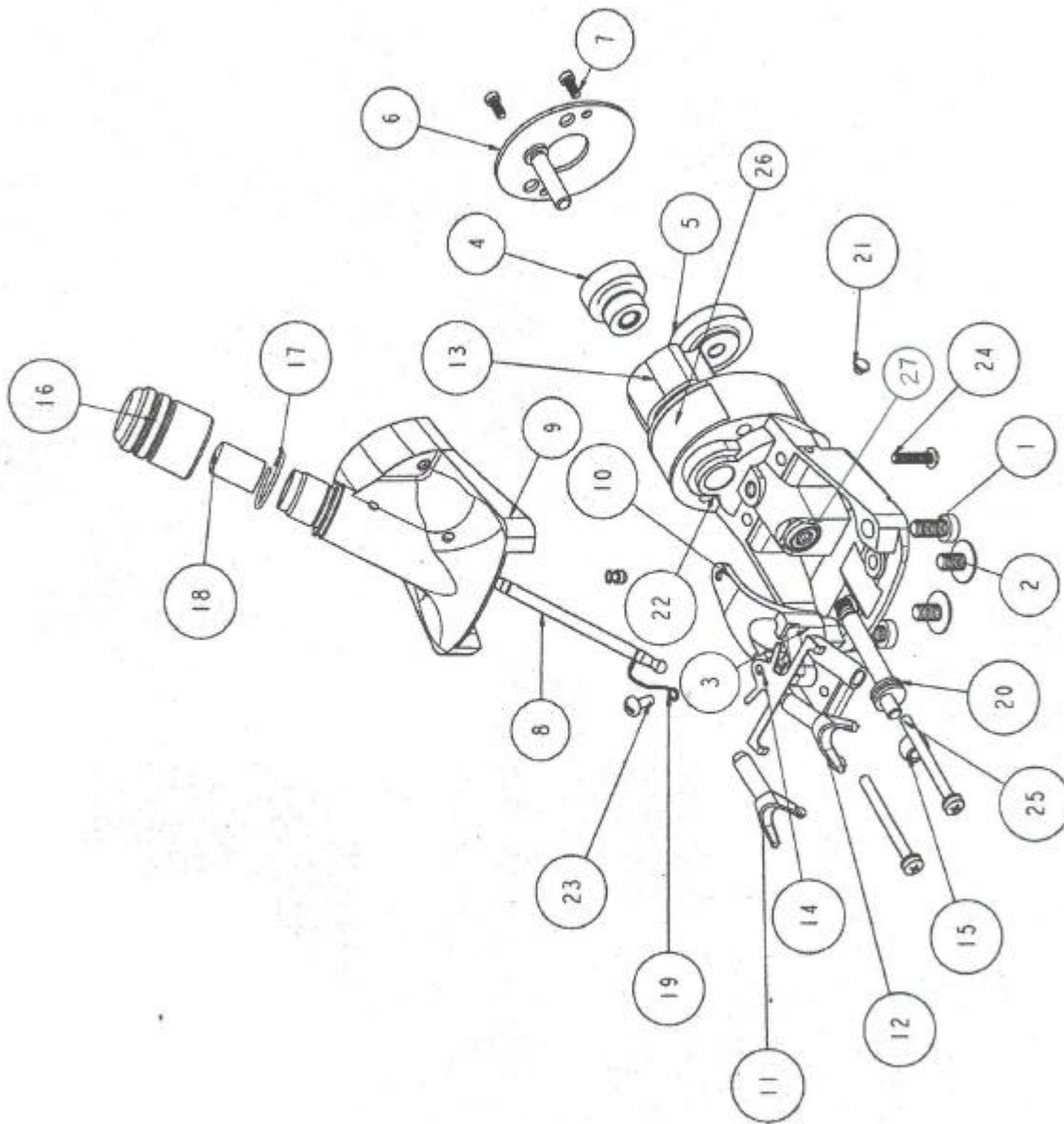
INSTRUCTIONS	COL. NO.
110714-000-000	1

NEW MODELS ADDED ⇨ FIRST ISSUE	3/00	COLUMN #:	1																
104380-000-000 SHEARMASTER HEAD ASSY.	X																		
PACKED WITHOUT BLADES	X																		
3000 CUTTING STROKES PER MINUTE	X																		
HORSES, CATTLE, SHEEP, LLAMAS, & GOATS	X																		
SINGLE SPEED	X																		
VARIABLE SPEED	X																		
MODEL OR SERVICE NO. COLUMN →	1	2	3	4	5	6	7	8	9	10	11								

INDEX NO.	PART NUMBER	* WAS PART NO.	DESCRIPTION	Basic Parts ↓ 078153-313-000	QUANTITY REQUIRED															
					1	2	3	4	5	6	7	8	9	10	11					
1	042110-000-000		SCREW-MS	2																
2	042187-000-000		SCREW-SP	2																
3	042445-000-000		NUT-MS	1																
4	042883-000-000		GEAR ASY	1																
5	044910-000-000		VEN-GEAR-CRANKSHAFT	1																
6	044911-005-000		COVER ASY	1																
7	044915-000-000		SCREW-MS	2																
8	044916-000-000		PIN-TENSION	1																
9	044917-005-000		HSG-UPPR-ASY	1																
10	044924-005-000		FORK ASY	1																
11	044926-000-000		YOKE-MACH-R.H.	1																
12	044927-000-000		YOKE-MACH-L.H.	1																
13	044993-000-000		INSULATOR-GEAR	1																
14	045503-000-000		SPRING-RETAINING	1																
15	055677-000-000		ROLLER-CRANK	1																
16	055680-100-000	055680-000-000	NUT-TENSION, BLACK	1																
17	055681-000-000		SPRING-TENSION	1																
18	055688-000-000		CUP-TENSION NUT	1																
19	055689-000-000		SPRING-RETAINING	1																
20	103723-000-000		CRANKSHAFT-SHEARMASTER	1																
21	104331-100-000	104331-000-000	SET SCREW, BLACK	1																
22	104397-005-000		HSG-LOWER-ASY	1																
23	042106-010-000		SCREW-MS	1																
24	042109-005-000		SCREW-MS	2																
25	042139-000-000		SCREW-MS	2																
26	104478-001-000		NAMEPLATE-SHEARMASTER SPARE HEAD	1	1															
27	103722-000-000		BEARING-NEEDLE	2																

MANUAL: STEWART
SECTION: CLIPPERS

CONTINUED ON REVERSE SIDE
PAGE: 211



NOTE: NUMBERS SHOWN ON
DRAWING ARE INDEX NUMBERS
ONLY. ORDER PARTS BY CORRECT
PART NUMBER.