



## **PREG-TONE® SERIES 6 INSTRUCTIONS**

*Your new PREG-TONE is set up for swine and must be changed if it is to be used on other animals. See Animal Selection Chart.* The **PREG-TONE** emits high frequency sound waves called ultrasound from the transducer (“probe”). The ultrasound waves travel into the body and reflect (echo) back from tissue and fluid surfaces to the probe. The reflected sound waves are processed by the instrument to determine if there is amniotic fluid (“fluid”) in the uterus. The presence of fluid in the uterus indicates pregnancy. If fluid is detected, a continuous tone is produced. *For purposes of illustration, the following instructions are based on swine. Additional instruction pages may be included for certain other animals. All instructional material is posted on our Internet site, <http://www.rencocorp.com>.*

Testing may begin between 15 and 30 days after breeding. The **PREG-TONE** has been clinically proven to be 100% accurate 30 days after breeding. At 65 to 70 days after breeding the litter displaces the fluid and the testing accuracy decreases. Accurate testing is the result of placing the probe on the proper spot on the sow, at the right time, making good skin contact, aiming the probe in the proper direction, and maintaining the instrument in proper working condition.

### **A. BEFORE TESTING**

Connect the cable to the **PREG-TONE** and probe, **twisting the barrels on each connector to lock**. Turn the instrument on. The red light should be lit. If not, recharge battery (about 16 hours). See Section D if the light does not stay on after a complete charge.

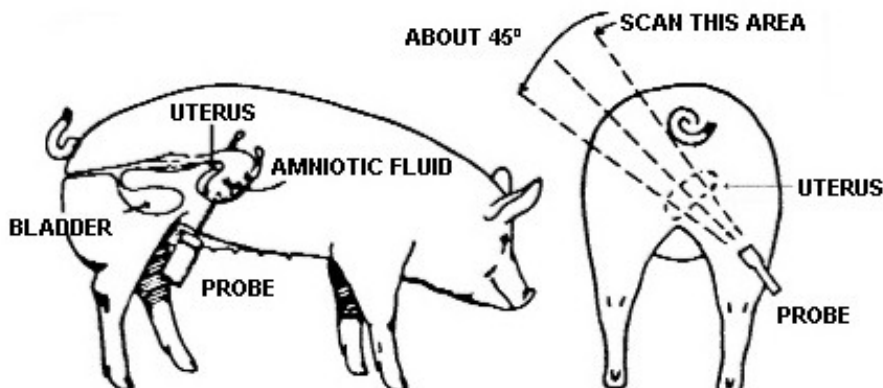
### **B. TESTING PROCEDURE**

You **must** use a contact fluid, such as lightweight oil, (mineral oil, cooking oil etc.), in order to make good contact between skin and probe.

It is best to quiet and isolate the sow during the test. Confinement is not required, but the sow should stand while you approach and place the probe on her. You may need 15 to 20 seconds to complete a test at first, but with practice you can get good test results in as little as 5 seconds.

Turn the instrument on and put contact oil on the sow (or probe). Place the transducer on the **RIGHT SIDE** of the sow, 2 inches (5cm) in front of the rear leg and 1 inch (2.5cm) above the nipple line (See diagram). Work the probe into the oil and aim it approximately 45° forward and 45° to the side.

The procedure is to scan across the uterus to detect any fluid that may be there. You will first hear an intermittent beeping when you make good skin contact. This means that ultrasound is entering the sows body and returning properly. The **PREG-TONE** will return a continuous tone (the pregnant signal) if it detects fluid. The contact tone (intermittent beeping) means that the sow is open. If the sow tests open on the right side, repeat the test on her left side. Remember to put more contact oil on the sow or probe for each test. ***Ultrasound will not pass through air. Use of sufficient contact oil to displace air bubbles is extremely important!***



### **C. TESTING PROBLEMS**

1. **NO LIGHT:** If red light does not stay on when instrument is turned on, battery power is too low. Connect the **RENCO** charger and charge for at least 16 hours. Make sure that the charger connector is snapped into place and the power switch is **OFF**. If that doesn't help, try another wall socket. If it still only operates for a short period of time between charges, do as follows: Disconnect charger from instrument. Leave the power switch **ON** for 12 hours. Turn power switch **OFF** and charge for at least 24 hours. Repeat cycle up to 3 times. If the problem still exists, the batteries will probably have to be replaced and you should notify your dealer or the factory.

2. **NO "CONTACT" TONE:** You must be able to get the intermittent tone indicating good skin contact. The transducer must have a good contact with the skin for ultrasound to penetrate the skin. All of the air between the transducer and the skin must be excluded. First try using more contact oil. It may also be necessary to remove manure, dirt, and excess hair. If this fails to produce the intermittent beep, place some water in the palm of your hand and place the probe on it. If all of these things fail, contact your dealer or the factory.

3. **"CONTACT" BUT NO "PREGNANT" TONE ON PREGNANT ANIMALS:** Aim the transducer in the direction of the bladder. Assuming it is not empty, it will simulate a pregnant uterus, and produce the continuous tone. If still no tone, then with the **PREG-TONE** turned on, put 6 inches of water in a glass and put the transducer head on the surface of the water. You should hear a continuous tone, (the pregnant tone) if not, contact the factory.

4. **CONTACT TONE ALWAYS FOLLOWED BY A PREGNANT TONE EVEN ON OPENS:** Make sure you are **NOT** aiming the probe toward of the bladder. If the bladder contains any urine, it will always give the pregnant tone, seemingly indicating pregnancy. If this fails to get the proper results, check the cable connections to probe and instrument. A damaged cable or cable connector could cause the pregnant tone. If the cable looks damaged, replace with a new cable; else contact your dealer or the factory.

5. **NO SOUND AT ALL:** Check all of the cable connections, recharge batteries, and follow the above tests. If that doesn't help, contact your dealer or factory.

### **D. BATTERY**

The instrument is powered by a Nickel Metal Hydride (NMH) rechargeable, environmentally friendly battery, that does not need to be recycled. It is not a standard NMH battery and must only be charged with the **RENCO** charger. *Use of other chargers voids the instrument warranty and could damage both battery and instrument.*

#### **Charging The Battery**

**CAUTION: OBSERVE THE CHARGER RATINGS. MAKE SURE THAT CHARGER IS PROPERLY RATED FOR YOUR LOCALITY. DO NOT USE ON DIRECT CURRENT, (DC) LINES. DO NOT USE THE PREG-TONE WITH THE CHARGER CONNECTED TO IT.**

(A) Make sure **POWER** switch is **OFF**. (B) Plug charger into wall outlet. (C) Plug charger cable into the proper receptacle on rear panel of the instrument, and **push it all the way until it stops**. A full charge is obtained in 16-20 hours. The unit will operate for 8-10 hours on a full charge. Using the **RENCO** charger on other batteries or devices such as "Hotshots", can damage it and voids warranty.

### **CAUTION: DO NOT USE THE PREG-TONE ON HUMAN BEINGS**

#### **RENCO CORPORATION**

116 Third Avenue North  
Minneapolis, MN 55401 USA

INTERNET: <http://www.rencocorp.com>

TELEPHONE: (612) 338-6124

TOLL-FREE: (800) 359-8181

FAX: (612) 333-9026

EMAIL: [tech-support@rencocorp.com](mailto:tech-support@rencocorp.com)