



## MTI500-WB Load Bars



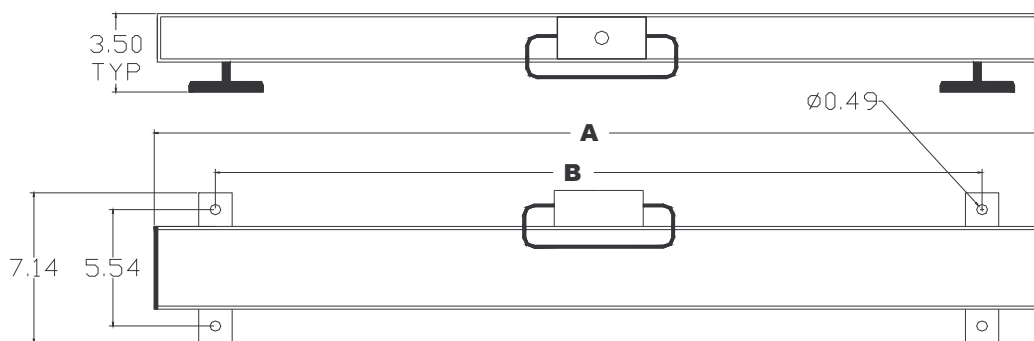
### Introduction:

This highly durable scale is designed with simplicity and portability in mind. In just a few minutes the entire system can be setup and ready to weigh. The standard system includes two weigh bars with built in handles and 20' of homerun cable, quick connector, and a NEMA 4X stainless steel digital indicator with backlight.

This fully portable system is commonly used for livestock weighing. Simply place the bars under an existing squeeze chute or platform and your ready to weigh animals. Standard capacity is 2,500 lb per bar with a total system capacity of 5,000 lb. for the 33" and 40 inch lengths. The 22" length bars are 1,000 lb individual capacity with a total capacity of 2,000 lb.

*Toll-Free Telephone*  
**888-684-9344**

## Dimensions:



<b>PART #</b>	<b>A</b>	<b>B</b>
MTI500WB40	40.00	33.87
MTI500WB33	33.00	27.50
MTI500WB22	22.00	16.50

**NOTE: All dimensions in inches**

## Specifications:

**Light Weight & Portable:** Can be positioned to weigh easily, or store when not in use. Each Weigh Bar is fitted with an easy carry handle; this provides quick and easy setup and break down for total portability.

**Low Profile:** Less than 4" high. Supplied in pairs. Total capacity of beams is 5000 pounds per pair in the 40" and 33" length and 2000 pounds for the 22" length.

**Animal Motion Hold:** Special software allows you to obtain an accurate weight even if the animal keeps moving on the scale.

**Full Duplex RS-232 Port:** The Full duplex RS-232 serial output provides on demand output to a printer, computer, or other compatible devices.

**LCD High Resolution Display:** Large easy to view. 75" high LDC backlit display.

**Power:** Comes with 6 V rechargeable battery and AC adapter

**Construction:** Weighbars are painted steel construction. Digital weight indicator is stainless steel, NEMA 4X construction.

• 33 Mainsail Drive • North Kingstown • Rhode Island • 02852 •  
Phone: +1.401.583.0096 • Fax: +1.401.583.0101 •