

# Ravap® E.C.

Broad Spectrum Insecticide



**You raise the livestock. We'll raise their level of protection.**

Put a protective fence between pests and your livestock and poultry. **Ravap® E.C.** is a powerful, easy-to-use insecticide that forms a protective barrier against pests. Avoid the physical and economical consequences of pests. Put your animals on the right side of the fence and pests on the wrong side with **Ravap® E.C.**

## Works Fast, Lasts Long

- Fast acting.
- Lasts up to 6 weeks.
- Contains Rabon® and Vapona® insecticides.
- Safe for all livestock and poultry facilities.
- Mixes easily with water for spray application.

## Avoid The Physical And Economic Effects Of Pests

- Animal stress.
- Reduced weight gain.
- Reduced feed efficiency.
- Increased susceptibility to disease.
- Reduced profits.
- Greater nuisance.

## Beef And Dairy Application

- Use as spray, back or face rub.
- Easy use with approved back rub base oils.
- Safe for use on lactating dairy cattle.
- Aids in control of Lone Star ticks, face flies, horn flies and maggots.

## Poultry Application

- Use as a roost paint and premise spray.
- Safe for use on caged chickens and poultry premises.
- Controls Darkling (litter) beetles, lice mites, flies and fowl ticks.

## Product Information

### Name:

Ravap® E.C.

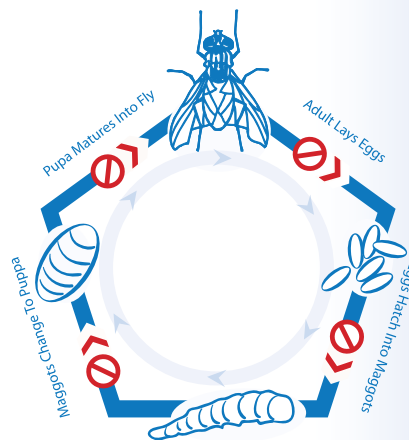
### Code:

216311092  
216311090  
216311091

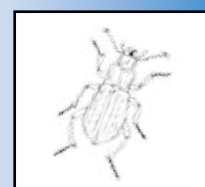
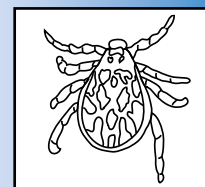
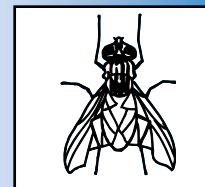
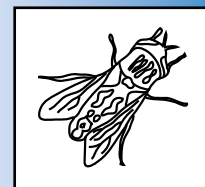
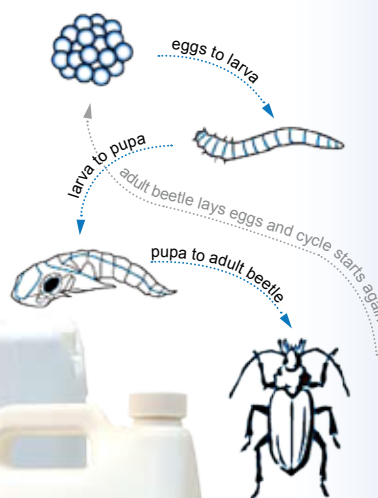
### Size:

Quart  
Gallon  
5 Gallon

## Life Cycle Of A Fly



## Life Cycle Of A Litter Beetle



## Application And Use Directions

### Livestock Use Directions

Use	Insect	Dilution - Ravap In Water	Remarks
Livestock spray (beef cattle)	Horn Flies, Lice, including Tail Lice, and aids in control of Face Flies	1 gal. in 75 gal. or 5 oz. in 3 gal.	Dilute in water as indicated and spray directly on the animals only to the point of runoff. Use between ½ to 1 gal. of diluted spray solution per animal depending on size and hair coat. Do not treat more often than every 10 days. Do not apply to calves under six months of age. Brahman and Brahman-cross cattle should not be treated as they may show hypersensitivity to organophosphate pesticides. Do not apply in combination with other dermal organophosphate pesticides (e.g. trichlorfon). There is no withholding period from last application to slaughter.
	Horn Flies, Lone Star Ticks	1 gal. in 200 gal. or 2 oz. in 3 gal.	Apply as above. For severe tick infestations, dilution may increase to 1 gal. in 50 gal. water.
Livestock spray (lactating dairy cattle)	Horn Flies, Lice, Lone Star Ticks, and aids in control of Face Flies	1 gal. in 200 gal. or 2 oz. in 3 gal.	Dilute in water as indicated. Direct spray to cover thoroughly with up to ½ gal. of the dilution per animal. Repeat as necessary. Do not apply to calves under six months of age. No milk discard is required. Care should be taken that the spray does not come in contact with the lactating cows' teats unless they are washed with an approved cleansing solution and dried before milking. Apply the spray at least 20 minutes prior to milking or after milking has been completed.

Note: Do not make direct application to livestock more frequently than once per day.

### Backrubber Use Directions

Use	Insect	Dilution - Ravap In Water	Remarks
Backrubber or Facerubber (beef and dairy cattle)	Horn Flies, and aids in control of Face flies	1 gal. in 25 gal. or 5 oz. in 1 gal.	Mix with any approved backrubber base oil. Pour diluted solution into oil reservoir of mechanical backrubbing devices or pour 1 gallon per 20 linear feet on burlap or rope backrubbers. Keep backrubber or facerubber charged.

### Poultry Use Directions

Use	Insect	Dilution - Ravap In Water	Remarks
Caged Chickens	Lice & Mites	1 gal. in 50 gal. or 5 oz. in 2 gal.	Apply 1 gal. of dilution/100 birds under high pressure (no less than 100-125 psi) to the vent and fluff areas from below. Repeat when necessary; however not more often than every 14 days. For individual bird treatment, apply 1 ounce of dilution per bird.
Chicken On Litter	Lice & Mites	1 gal. in 50 gal. or 5 oz. in 2 gal.	Apply 1-2 gal. of dilution/1000 sq. ft. evenly with penetration of litter surface. Also apply thoroughly to walls, roosts, cracks and crevices. Spray birds as above. Treat roosters carefully to avoid reinfestation of breeding flocks.
Roost Paint	Lice & Mites	1 gal. in 25 gal. or 5 oz. in 1 gal.	Apply 1 pt. of dilution/100 ft. of roost area with brush or spray.
Poultry Buildings	Fowl Tick (Blue Bug)	1 gal. in 25 gal. or 5 oz. in 1 gal.	Apply 1 gal. of dilution/100-150 sq. ft. to thoroughly cover walls, ceilings, floors, cracks and crevices using high pressure spray.

### Premise Use Directions For Poultry And Livestock Facilities

Use	Insect	Dilution - Ravap In Water	Remarks
Residual Surface Spray	Flies, Gnats, Litter Beetles, Mosquitoes, Spiders and Wasps	1 gal. in 25 gal. or 5 oz. in 1 gal.	Apply 1 gal. of dilution/500-1000 sq. ft. Thoroughly cover walls, ceilings or other areas where pests rest or congregate in dairy barns, horse barns, poultry houses, swine buildings, livestock sheds and other farm buildings. Extreme infestations may necessitate increasing the diluted spray to 1 gal. per 12 ½ gal. or 10 oz. per 1 gal. of water.
Larvicide	Maggots (Fly Larvae)	1 gal. in 25 gal. or 5 oz. in 1 gal.	Apply 1 gal. pf dilution/100 sq. ft. of droppings as a course spray. Repeat at 7-10 day intervals until droppings begin to come up, then treat only "hot spots" (small areas found to have large numbers of maggots). Do not spray manure where runoff to soil or water can occur. Do not spray animals directly with this concentration.

### Kennel Use Directions

Residual Surface Spray- Kennels	Ticks, Fleas	1 gal. in 50 gal. or 5 oz. in 2 gal.	Apply 1 gal. of dilution/500-1000 sq. ft. Thoroughly treat infested kennel and outside runways.
---------------------------------	--------------	--------------------------------------	---

Contains Rabon® and Vapona® insecticides

(See label for full use and precautionary statements)

#### Active Ingredients By Weight

Tetrachlorvinphos:	
(z)-2-chloro-1-(2,4,5-trichlorophenyl)	
vinyl dimethyl phosphate .....	23.0%
Dichlorvos .....	5.3%
Related Compounds .....	0.4%
Other Ingredients .....	71.3 %
TOTAL .....	100%

KMG offers the ultimate protective barrier against pests. Ask how Rabon® Beetle Shield (dust insecticide), Rabon® Oral Larvicide (feed through larvicide), can control your pest problems.

KMG Chemicals, Inc. • Houston, TX - USA

