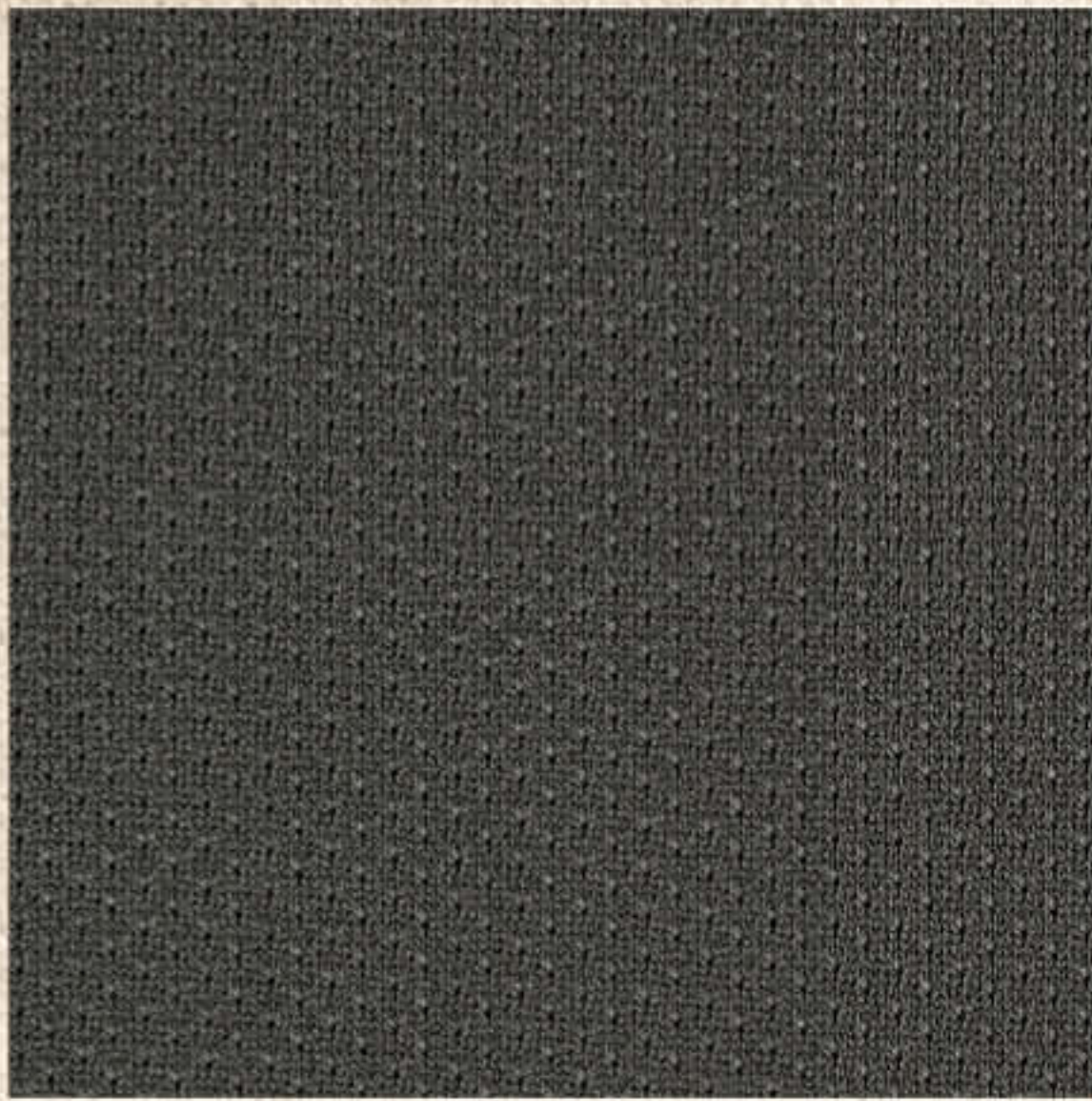


# OUTERWEAR

## Lining Guide

---



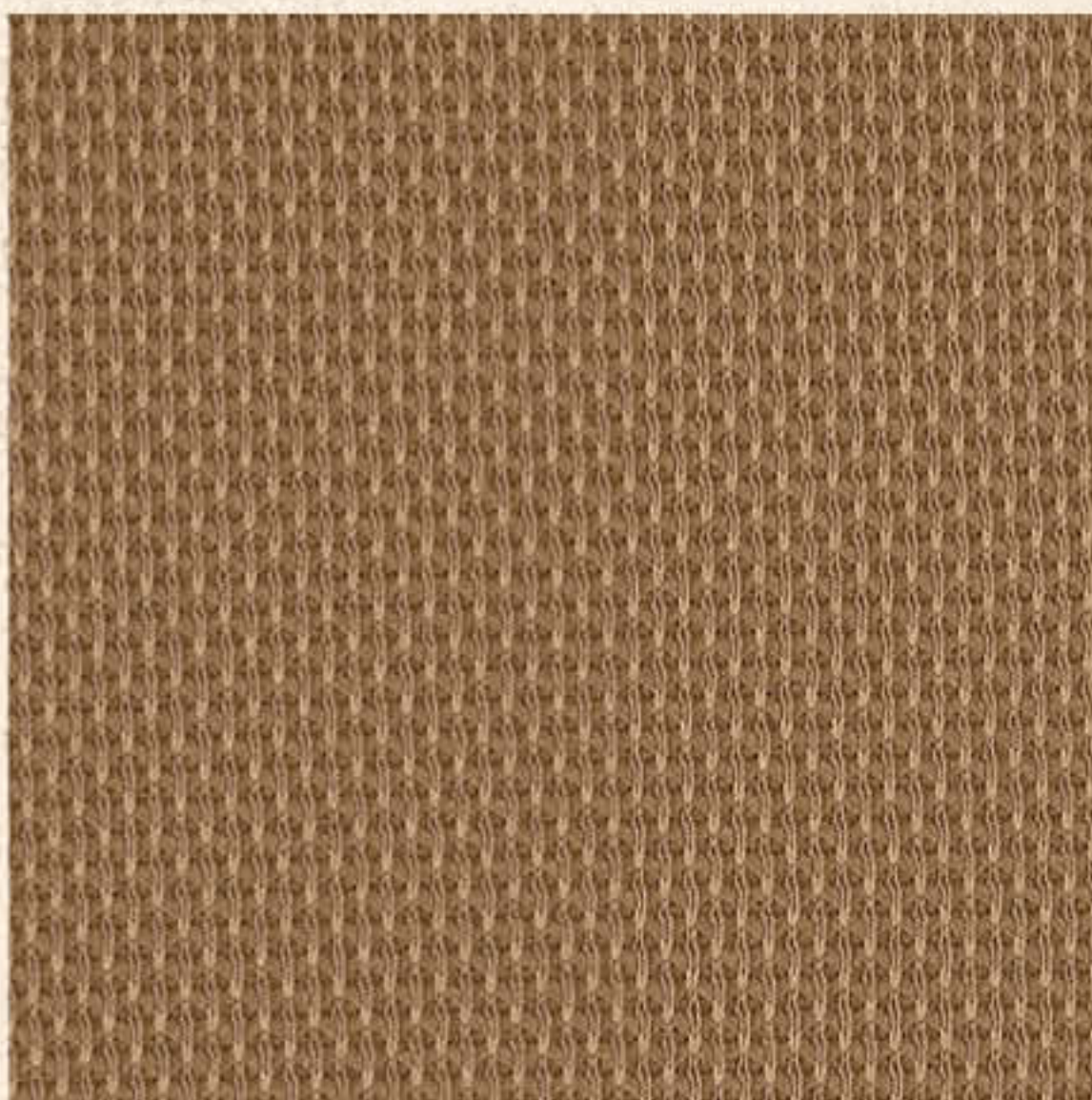
### Mesh Lining (Warm)

Lightweight 100% polyester mesh.  
Featured in: B216, C72, J162, WJ002



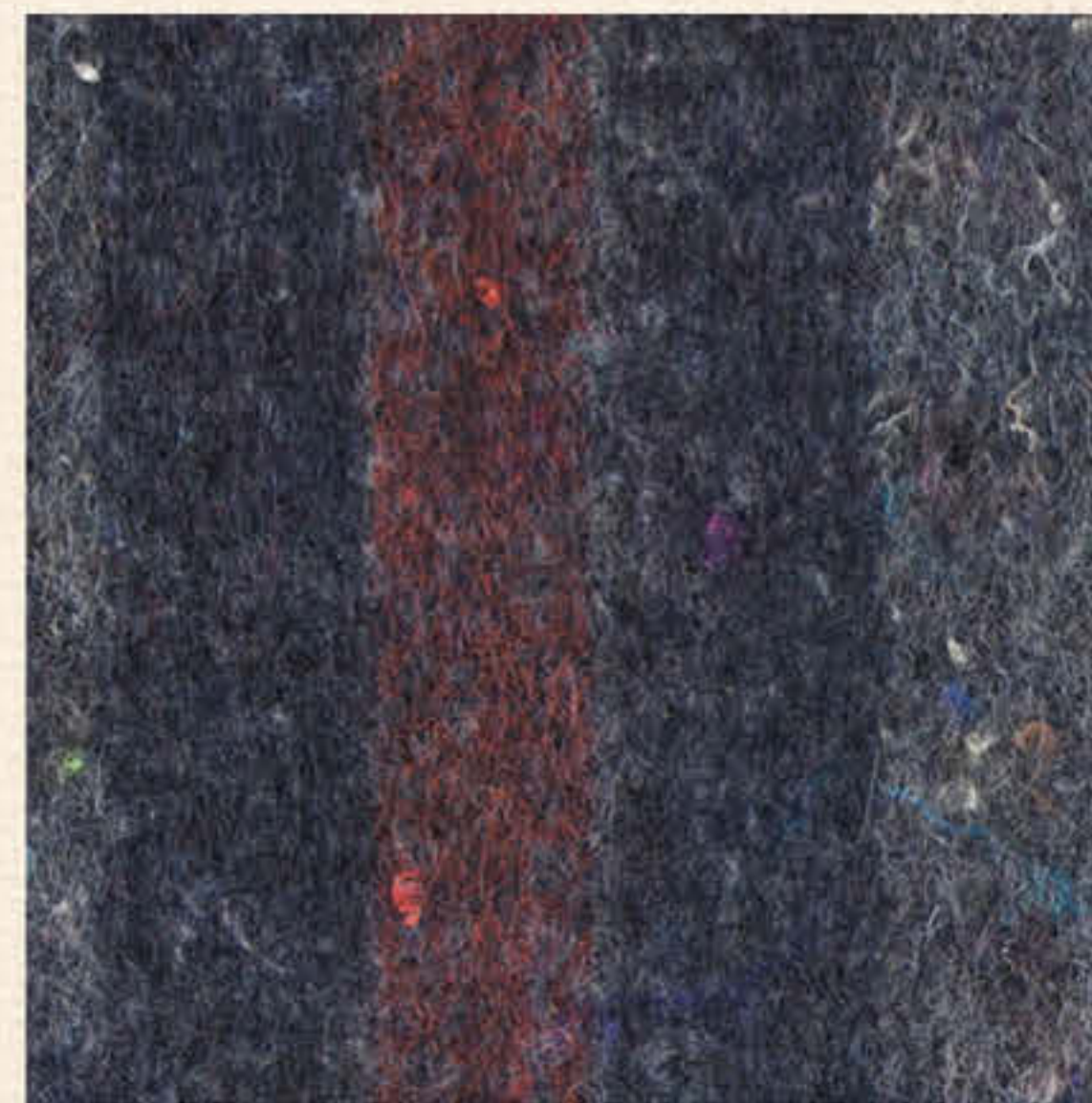
### Arctic Quilt Lining (Warmest)

Nylon taffeta quilted to heavyweight, high-loft polyester batting. Featured in: C03, C26, C55, J02, J22, J133, R03, R33, V01, V02, WC026, X02, X06



### Thermal Lining (Warm)

Warm and lightweight 100% polyester thermal weave.  
Featured in: J25, J131, J220



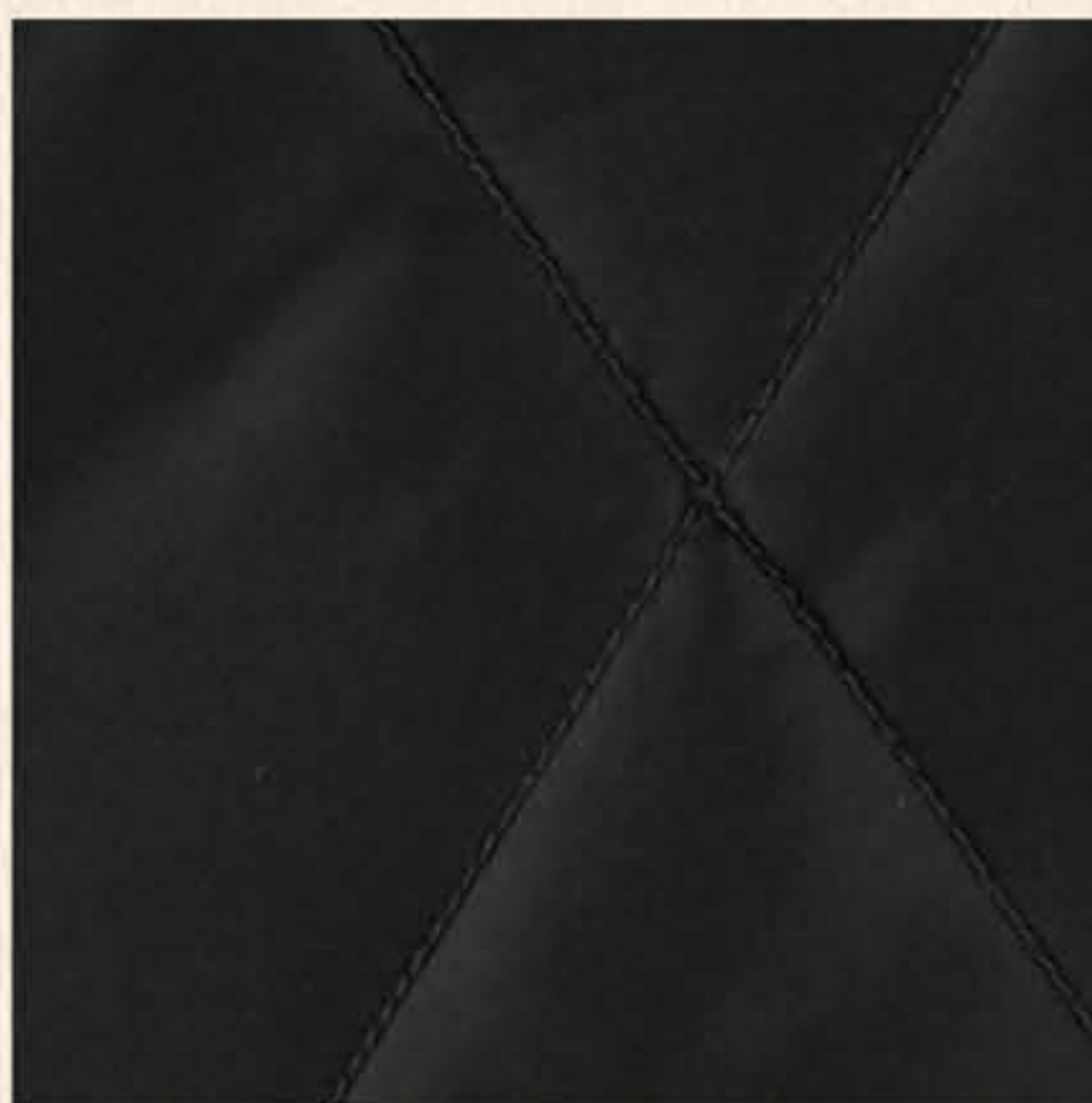
### Blanket Lining (Warmer)

Blended acrylic and polyester in stripes or plaid. Featured in: C01, C02, J01, J97



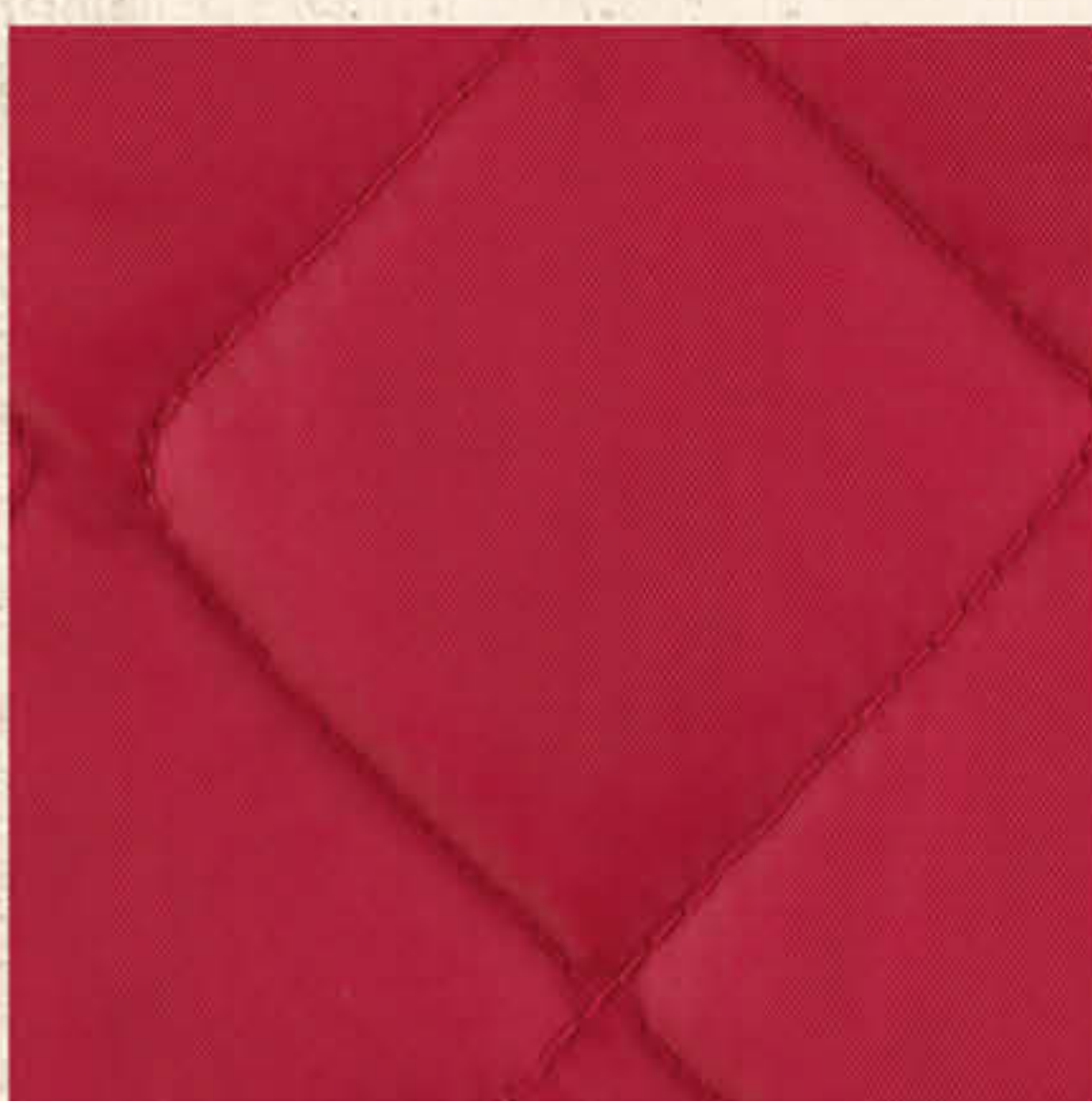
### Sherpa Lining (Warmer)

100% polyester high loft fleece.  
Featured in: C61, C95, J141, J164, J205, V26, V33, WC061, WJ097, WJ141, WV001



### Nylon Quilt Lining (Warmer)

Nylon taffeta quilted to lightweight polyester fill.  
Featured in: J175



### Nylon Quilt Lining (Warmer)

Nylon taffeta quilted to lightweight polyester fill. Featured in: R02, R27, R38, R41, R54, R61, X01



### Quilted Flannel Lining (Warmest)

Brushed polyester tricot quilted to midweight polyester batting. Featured in: J13, J14, J130, J140, J165, J221, WJ130