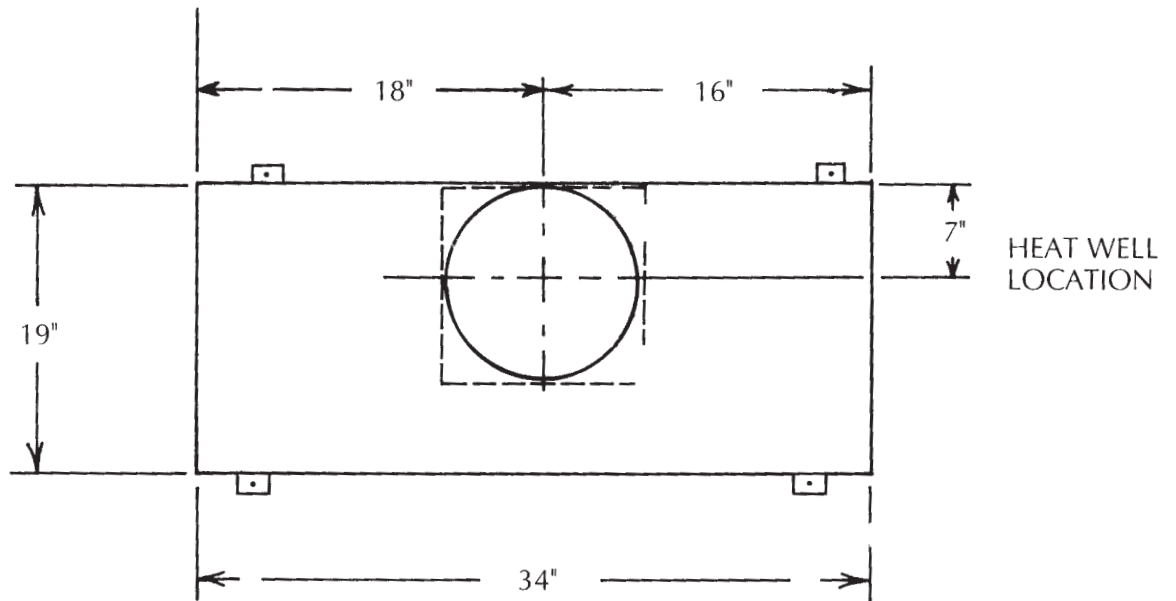


**Model  
#3410E  
Hog Waterer  
Electric**

**#3410E Specifications**

2 - 10" openings / Lift up lids / Electric

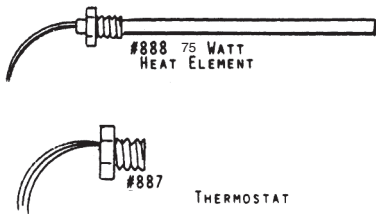
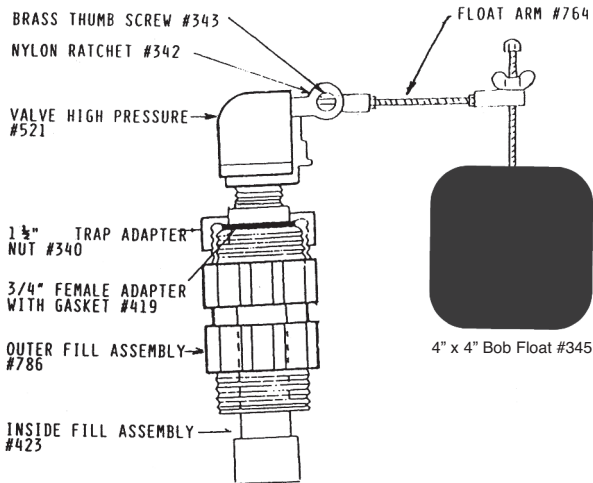
Capacity	Gallons	Dimensions	Weight
100 Market Hogs 50 Sows	6 (23 Liters)	19" x 34" x 16" tall (48 x 86 x 41 cm)	57# (26 Kg)



We recommend all anchor bolts be drilled in after the tank is set because dimensions may vary.

# PARTS PRICE LIST FOR #3410E

Founts manufactured before May 2016 use Part #673 - 3/4" Special "T" (\$11.55) in place of Part #672



Part #	Description
<b>714</b>	<b>Top assembly complete</b>
918	Top assembly without lids
715	Hinge rod
716	Lift up lid
544	Lid bracket
545	1/4" X 1" S.S. bolt
726	Inspection plug
636	Hinge pin bushing
729	Inspection plug gasket
762	Top gasket 103"
<b>902</b>	<b>Base assembly complete</b>
706	5/16" x 2 1/2" S.S. lag bolt
730	Overflow & vent tube
347	5/16" x 3/4" S.S. washer
886	Inspection cap
887	Thermostat*
888	Heat element*
545	1/4" x 1" S.S. bolt
890	Inspection cap gasket
893	Wire connector
<b>728-5</b>	<b>#3410E parts bag</b>
344	3/8" x 3 3/4" S.S. anchor bolt
351	3/8" S.S. washer
352	5/16" x 1" S.S. bolt
353	Anchor clip
699	3/8" S.S. nut
442	Drain plug with bolt
786	Outer fill assembly
456	Bottom gasket 101"
919	Heat cable*
<b>421</b>	<b>Valve assembly</b>
521	Valve high pressure
340	1 1/2" trap adapter nut
419	3/4" female adapter with gasket
348	1/4" x 3/4" rubber gasket
<b>765</b>	<b>Float assembly</b>
342	Nylon ratchet
343	Brass thumb screw
345	4" x 4" bob float
764	Float arm
<b>423</b>	<b>Inside fill assembly</b>
355	Pipe insulation
337	3/4" female adapter
961	3/4" fill pipe