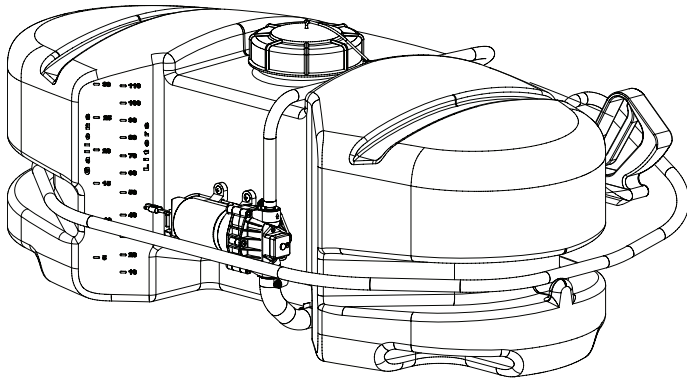


5301478  
MODEL NO. LG-30-S  
30 Gallon Spot Sprayer

ASSEMBLY / OPERATION INSTRUCTIONS / PARTS



Your authorized dealer is the best source of replacement parts and service. To obtain prompt, efficient service, always remember to give the following information.

1. Correct part description and part number.
2. Model number of your sprayer.
3. Serial number of your sprayer.

Part number and descriptions can be obtained from the illustrated parts list section of this manual. Whenever you need parts or repair service, contact your distributor / dealer first. For warranty work always take your original sales slip, or other evidence of purchase date, to your distributor / dealer.

**BEFORE RETURNING THIS PRODUCT  
FOR ANY REASON, PLEASE CALL  
1-800-831-0027**

**IF YOU SHOULD HAVE A QUESTION OR  
EXPERIENCE A PROBLEM WITH YOUR  
FIMCO INDUSTRIES PRODUCT:  
1-800-831-0027**

**BEFORE YOU CALL, PLEASE HAVE THE  
FOLLOWING INFORMATION AVAILABLE:  
SALES RECEIPT & MODEL NUMBER. IN MOST  
CASES, A FIMCO INDUSTRIES EMPLOYEE CAN  
RESOLVE THE PROBLEM OVER THE PHONE.**

**TECHNICAL SPECIFICATIONS**

- 30 Gallon Polyethylene Tank
- 12 Volt Diaphragm Pump - 2.1 G.P.M.
- 15 Foot Handgun Hose
- Pistol Grip Handgun
- Suction Line Filter

**ASSEMBLY**

The sprayer is fully assembled at the factory. Hook up the wiring to an existing 12 volt power source. The red wire of the two wire set must be connected to the positive post on the battery or the "Hot" connection on a switch or to the ammeter. The brown wire may be grounded or connected to the negative battery post.

**GENERAL INFORMATION**

The purpose of this manual is to assist you in operating your sprayer. Please read it carefully as it furnishes information which will help you operate and maintain your sprayer.

**OPERATION**

The pump on the sprayer is factory set to shut off automatically at a maximum of 60 PSI. The handgun may be shut off at any time when the pump is running. The pump will shut off when there is no discharge from the handgun.

The pumping system draws solution from the tank and to the pump. The pump forces the solution under pressure to the handgun.

**STOP WARNING STOP**

**DO NOT USE PUMP IN AN EXPLOSIVE  
ENVIRONMENT. DO NOT USE TO PUMP  
FLAMMABLE FLUIDS, GASOLINE,  
KEROSENE FUEL, OIL, ETC.**

**WARRANTY / PARTS / SERVICE**

Products are warranted for one year from date of purchase against manufacturer or workmanship defects.



[WWW.FIMCOINDUSTRIES.COM](http://WWW.FIMCOINDUSTRIES.COM)

1000 FIMCO LANE • P.O. BOX 1700 • NO. SIOUX CITY, SD 57049  
TOLL FREE: 800-831-0027 • TOLL FREE FAX: 800-494-0440  
Form No. 1306 (5004801 3/08) Printed In U.S.A.

It is important to test the sprayer with plain water before attempting actual spraying. This will enable you to check the sprayer for leaks in the plumbing system.

1. Open tank lid and be sure the tank is clean and free of foreign material. Fill the tank about half full with plain water.

**WARNING:** Some chemicals will damage the pump valves if allowed to soak untreated for a length of time. Always flush the pump after use. Do not allow chemicals to sit in pump for extended times of idleness. Follow chemical manufacturers instructions on disposal of all waste water from the sprayer.

**CAUTION**

**PRESSURE SWITCH OPERATION**

Pressure switch is pre-set at the factory. Improper adjustment of the pressure switch, may cause severe overload or premature failure. If the pump is subjected to rapid cycling during normal operation, or infrequent periods, damage may occur.

## AFTER SPRAYING

After use, fill the sprayer part way with water, start the sprayer and allow clear water to be pumped through the plumbing system and out through the handgun. Use the handgun to thoroughly wash all internal parts of tank and tank cover.

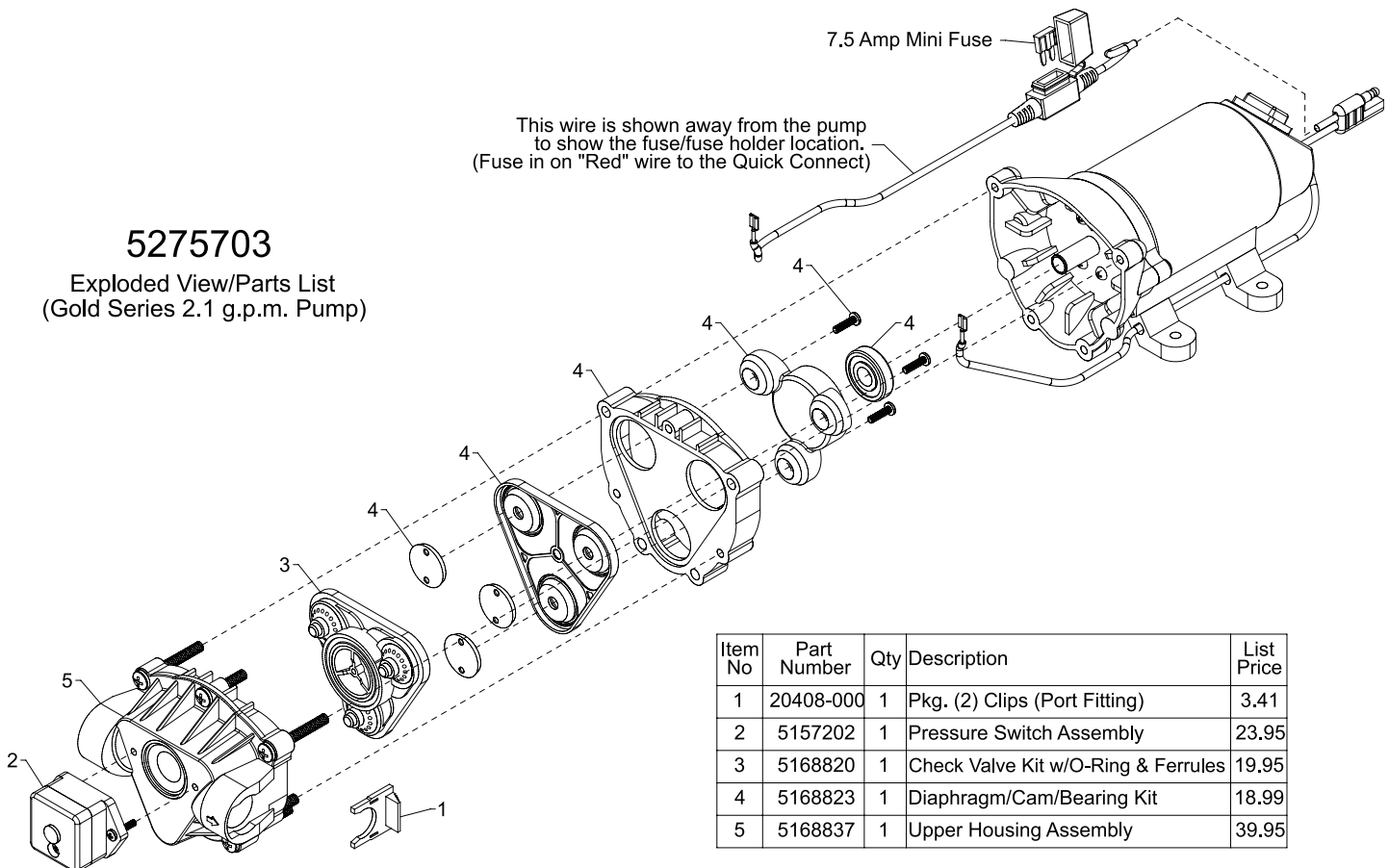
Refill the tank about half full with plain water and use a chemical neutralizer such as NUTRA-SOL or equivalent and repeat cleaning instructions above. Flush the entire sprayer with the neutralizing agent. Follow the chemical manufacturers disposal instructions of all wash and rinsing water.

## WINTER STORAGE

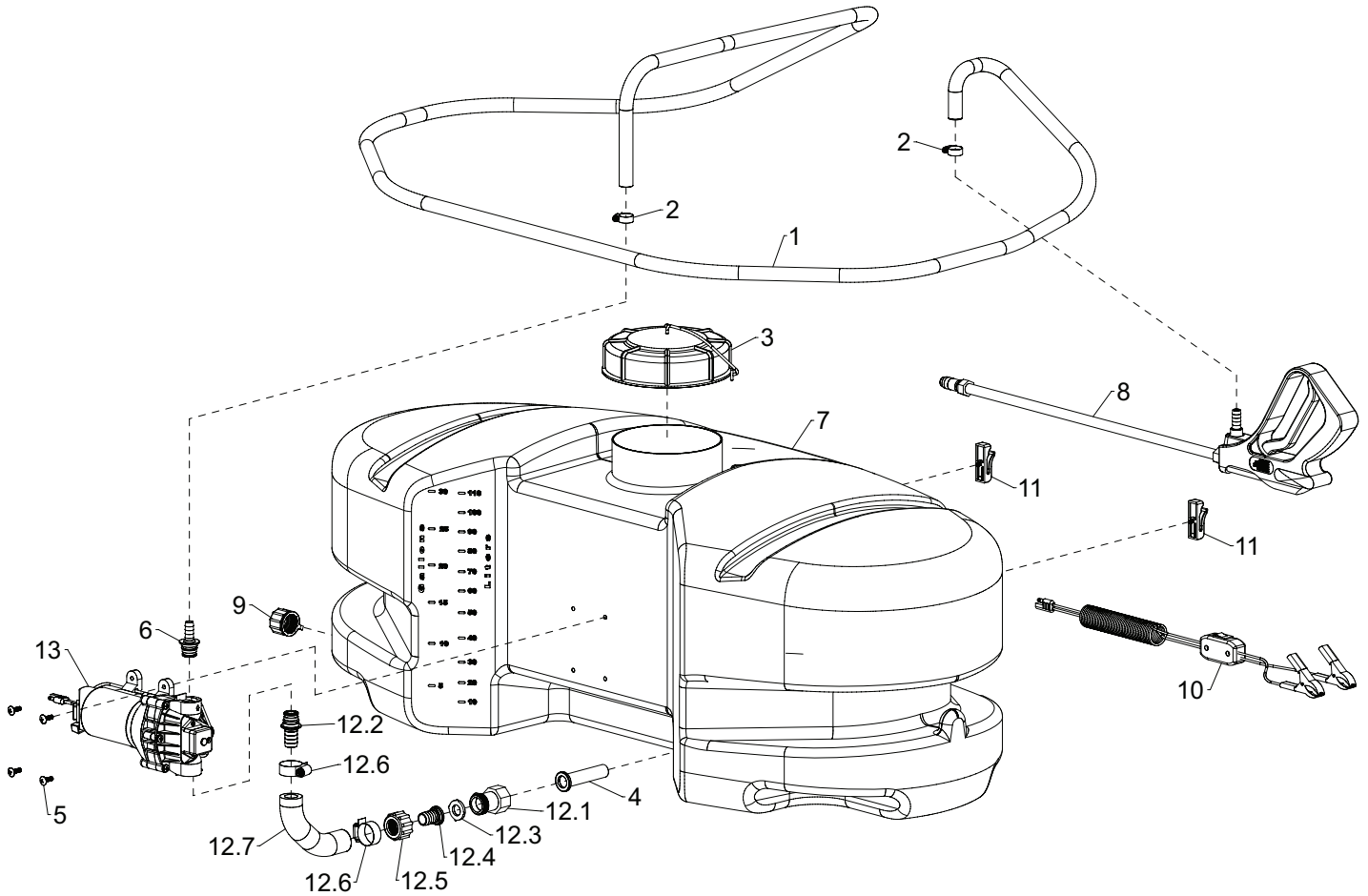
Drain all water out of the sprayer paying special attention to pump, valves, and spray gun. These items are especially prone to damage from chemicals and freezing weather.

The sprayer should be winterized before storage by pumping a solution of RV anti-freeze through the entire plumbing. Proper care and maintenance will prolong the life of the sprayer.

**5275703**  
Exploded View/Parts List  
(Gold Series 2.1 g.p.m. Pump)



Exploded View/Parts List:  
LG-30-S (5301478)



ITEM NO.	PART NUMBER	QTY.	DESCRIPTION	LIST PRICE
1	5020215	1	Hose, 3/8"-1 Brd. x 15 Ft.	8.50
2	5051114	2	Hose Clamp, 3/8"	.63
3	5058188	1	Tank Lid w/Lanyard	10.50
4	5116416	1	PVC Filter Screen, 1" O.D. x 2.81" Long (30 Mesh)	4.00
5	5117167	4	#10-24 x 5/8" Phillips Truss Head Machine Screw	.25
6	5168836	1	Port Kit Fitting, 3/8" Hose Barb	2.24
7	5169244	1	30 Gallon (New Style) Tank	65.00
8	5273959	1	Handgun w/X-26 Tip	24.95
9	5274373	1	Drain Plug Cap, Tether, and Washer Assembly	2.95
10	5274443	1	Lead Wire Assembly (w/Switch), 96"	9.99
11	5274880	1	Pkg. (2) Handgun Clips & (2) Screws	2.85
12	5275515	1	Intake Sub-Assembly	6.50
12.1	5143188	1	#35 Nylon Shut-Off Valve	2.53
12.2	5168835	1	Port Kit Fitting, 5/8" Hose Barb	2.24
12.3	5116242	1	Strainer, 1" Filter Washer	.31
12.4	5149036	1	Poly Swivel, 5/8" Hose Barb	.58
12.5	5006209	1	Poly Knurled Swivel Nut, 3/4" FGHT	.38
12.6	5051023	2	Hose Clamp, 5/8"	.67
12.7	5020080	1	Hose, 5/8"-1 Brd. x 6"	5.12
13	5275703	1	Gold Series 2.1 g.p.m. Pump	112.00